



P.O. Box 808  
7229 Main Street  
Bonners Ferry, Idaho 83805  
208-267-7720  
bcmuseum@meadowcrk.com  
www.bonnersferrymuseum.org  
Like Us on Facebook

**Current Board Members**  
The Boundary County Museum is operated by the Boundary County Historical Society, Inc., a 501c(3) non-profit organization. The current Board of Trustees is composed of:  
Cal Russell, President  
Dave Gray, Vice President  
Beulah Patterson, Treasurer  
Dottie Gray, Secretary  
David Koon, Trustee  
Marj Pinkerton, Trustee  
Vic White, Trustee  
Sue Kemmis, Curator  
The Board of Trustees meets at 5:30pm at the Museum on the second Tuesday of each month. The public is invited to attend.

If you have enjoyed the Boundary County Museum Calendars, you are in luck! The 2019 edition is on sale now for \$5.00 each. Every date has a bit of historical trivia, from 100 years ago. Thank you to the many sponsors for this project; it has been a success for the Museum, and has had a good return.

In addition to the weekly "Do You Remember" column in the Bonners Ferry Herald, the Museum staff was asked to take over the "This Week In History" column. A big "Thanks" goes out to the volunteers who jumped in to research for this project. The staff has completed one year of publication, completed the columns for the 2019 year, and has accumulated the information for the years 2020 and 2021! Now that is dedication!!

**NEW EXHIBIT**

The City Market is now open! Pickles can be purchased for 5 cents each, along with various cuts of meat, cheese, and vegetables. A meat slicer used by A.C. White's Lumber Camp 9 (1920s) will slice your favorite cuts to perfection, and the scale from Boundary Farmers Supply, Inc. will weigh your purchases with precision. Biscuit Boxes from the Naples Store, a sausage stuffer/lard press, recipe books, meat cleavers, and knives round out a great new display. Plan on visiting the Market soon.

*Continued from Page 1* There are 15 drainage districts in Boundary County, numbered in the order of application. District #1 was established in 1921, and District #16 was the last one established in 1949. One District, #14 never materialized. The panel also displays the number of acres in each of the 15 Districts: #2 being the smallest at 784 acres, while #6 boasts the largest at 5,141 acres. There were, on average, three commissioners chosen by the landowners to oversee operations. Further information regarding the Drainage Districts in Boundary County can be found at the Boundary County Museum in a study entitled "Kootenai Flats Idaho-Flood Control Plans Studies." U.S. Corps of Engineers.  
A project of this nature requires many hours and research, writing, editing, and finding photos to complement the text, as well as the volunteers to accomplish the task. The Humanities Scholars for this project were Tom and Tracy Iverson who served as authenticators as well as proofreaders. The Graphic Artist Designer was Andrea Kramer along with her husband Dave, who worked diligently to get a "perfect" layout after expertly touching up many of the Museum's archived photos so they "pop" off the panels. CW Wraps of Post Falls fabricated and installed the panels just in time for the dedication program. Museum volunteers Howard Kent, Terry Howe, Curator Sue Kemmis, and Dottie Gray provided the many hours of research and pulling the project together. In addition to the funds provided by the Idaho Humanities Council Grant, the Boundary County Commissioners authorized additional funds to complete the project. The Historical Society is grateful for all those who made this exhibit possible.

**UPCOMING EVENTS**

January 22 ~ Annual Meeting 6:00pm  
March 4 ~ "Idaho Day"  
May 1 ~ Summer Hours Begin  
May 4 ~ Opening Program  
The Museum is on Winter Hours: 10am to 4pm Fridays and Saturdays. Stop by and see the changes in your Museum.

**Thank You**

to the sponsors of the "Free Saturdays" in 2018  
Cal and Barbara Russell  
Dave and Dottie Gray  
Vic and Donna White  
Marj Pinkerton  
Howard and Donna Kent

Boundary County Historical Society and Boundary County Museum

# Time Capsule

Volume X Issue: End of Year 2018

**DEDICATION PROGRAM**

A dedication program was held at the Boundary County Museum on June 9th, to present the historic interpretive signs funded in part through an Idaho Humanities Council Grant and County grant funds, featuring the history of farming in the Kootenai Valley and the Bench Land. Guests enjoyed a brief video presentation which included the Merle Olsen ranch on the Deep Creek Loop, Elk Mountain Hops Farm near Porthill, the Dallas Amoth Farm, and Young Living Enterprises at Highland Flats. A few quotable quotes warmed up the crowd and put them into story telling mode, and attendees were encouraged to relay a story or two from personal experience. These ranged from a history of at least one family farm dating back to the Dust Bowl Days, to humorous anecdotes from a former County Extension Agent. Stories of amusing grain hauling trips, growing up and working on family farms, and various other recollections brought the past into the present with an abundance of laughter and lively discussion. The group then took a field trip to the back entrance of the Museum building to view the newly installed panels.  
Panel 1: "The Geology of Boundary County" illustrates the uplifting, faulting, and glaciation that formed the rugged mountain ranges, in contrast with the lowlands known



as the Kootenai Valley.

Panel 2: "Comparison of Land Forms" compares and contrasts the river valley, often referred to as "The Nile of the North," with the higher Bench Lands, commonly known as "God's Country." Soil fertility and farming practices appropriate to each are featured.  
Panel 3: "Farming in the Past" highlights early settlers clearing land for planting berries and fruit trees and establishing gardens and livestock. In the 1900s, steam power was replaced by gasoline engines some of which were referred to as "motor plows."  
Panel 4: "The Dust Bowl Days" traces the Depression Years of the '20s and '30s as refugees began clearing stumps to provide land suitable for farming. The Federal Farm Security Project provided resettlement tracts in the Valley.  
Panel 5: "Specialty Crops" and experimental crops became widely grown. Vegetable and seed crops, fruits, hops, and nursery farms appeared throughout the

area. Even more diversity to the industry has come into existence with essential oils used for fragrances, flower and honey bee farms.  
Panel 6: "Current Farming Practices" moves Agriculture into modern day, featuring modern tractors, combines, trucks, and research development of crop protection from diseases and pests.  
Panel 7: "Drainage Districts" features a large map of the districts that protect the Valley floor from serious flooding and erosion. Reclamation began in 1921, as residing landowners applied for and received authority to tax themselves to raise the money for construction and maintenance of dikes, ditches, and pumps. Some 35,000 acres of bottomland were drained and diked. Excess water from streams and river seepage was either pumped or naturally flowed by gravity into the Kootenai River by a system of drainage ditches. Today, as a result, a patchwork of dikes and ditches make the valley much more suitable for farming. *Continued on Last Page*

### Copeland Cemetery Tour

In 1892, The U.S. Government conducted land surveys in the Copeland



area; the present day site of the Copeland Cemetery being part of this survey. In 1905 a piece of land comprised of 80 acres was purchased as a homestead, and resold one month later. However, by that time, there were already 7 gravesites on the SW corner hill side; the first recorded site dating to 1898. At the time of the resale, the parcel was comprised of 80 acres minus 1 acre in the SW corner to be used for cemetery purposes. It was not until 1939, however, that the cemetery was platted and became the Copeland Cemetery.

Tour time was Saturday, September 29th at 1:00 p.m. The Museum's knowledgeable and entertaining guides shared stories of some of Boundary County's founders and pioneers, and explained the symbolism and meaning of engravings on headstones and monuments. Charles Edwin Laherty (1856-1898), was the first burial in the Ceme-

tery while the area was under the direction of the Knights of Pythias. His tombstone was made

by his wife Mary, and had become eroded and fragile. A new tombstone was erected by a member of the Laherty family just prior to the tour, thanks to the efforts of Museum volunteer, Randy Cummings. Many well-known county residents are buried at the Copeland Cemetery: Linnemeyer, Chisholm, Bradley, Guthrie, Tanner, Pedey, Vickaryous, Grunerud, and Ripatti, to name but a few. Common tombstone symbols include Lily of the Valley, The Latin Cross, Morning Glory, Mountains, Rivers, and Trees, all symbols that convey various meanings. A great deal of research and preparation goes into developing the historical cemetery tours. Sue, Howard, Terry, Randy, Marj, Carolyn, Alice, and Beulah spent many hours gathering information, plotting the cemetery map, writing the text and preparing the program. The Museum could not provide programs such as this without these dedicated volunteers. The

registration money was split between the Copeland Cemetery Association and Boundary County Historical Society, and a donation from the family of Charles Laherty was also received. So, just which cemetery will be the focus for next fall? Stay tuned!

### 100 Years Ago...

What global event was taking place in 1918 that tied Boundary County to the rest of the world? "The War to End All Wars," World War I, The Great War that originated in Europe and lasted from July 28, 1914 until November 11, 1918. This year, the 11th hour of the 11th day of the 11th month, marked the one hundredth year of the end of this devastating War.

The Boundary County Museum, held its Summer Opening Program on Saturday, May 5th, from noon until 2:30, featuring stories of how Boundary County contributed to this notable World War 1 effort.

A WW 1 Lunch was served in the Railroad Courtyard from 12 noon until 1:30. The menu featured "Doughboy Stew," Bread, "Soldier Biscuits," and World War 1 cake. The Museum's infamous trio of chefs (Vic White, Dave Gray, and Howard Kent) conjured up some of the best stews ever tasted!

Following lunch, adults were invited to attend Museum Historian, Howard Kent's reminiscences of Boundary County's involvement in the war: soldiers enlisting and being drafted, Red Cross volunteers, rationing, and the notorious Slampire Club! These were stories that only Howard can tell. If you have the 2018 Boundary County Historical Calendar, you can read about some of these unique highlights.

For the children, there were stories and games that were popular during 1918 and a cupcake walk. The weather was perfect for holding these activities outdoors in the Railroad Courtyard. In those famous words of Howard and Sue, "...and a good time was had by all."

### St. Michael's Church

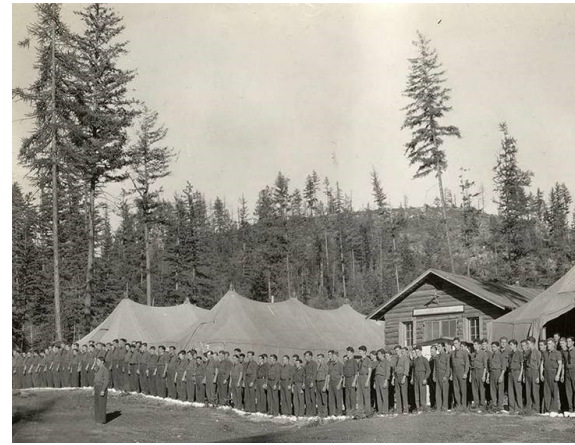
The Kootenai Tribe, being a nomadic people, traveled the Valley changing camp locations every time a new Chief was elected. Hence, the Jesuit Fathers reached them in their camps. From 1854 to 1890, many Fathers ministered to the Kootenai People from St. Ignatius Mission in Montana, the Old Mission at Cataldo, and the New Mission at DeSmet. The Jesuit Fathers who served in the Kootenai Valley were: Fathers Menetrey, Bandini, Tosi, Jacquet, Canastrelli, and Post. Once a year they arrived spending three or four weeks instructing the native people in the doctrines and practices of the church.

In 1890, under Chief Morrisse Chiquiet, grandson of Chief Three Moon, a crude tamarrack log cabin packed with dirt having a cedar bark roof was constructed about three and one-half miles west of Bonners Ferry to serve as a Chapel. Within a few years this Chapel collapsed and the newly elected chief, Chief Isadore, received on behalf of his people, the gift of donated lumber from the Village of Bonners Ferry and a rough lumber building was constructed for a Chapel.

In 1907, a timber framed Chapel was constructed by M & B Carpenter Shop owned by John Muhlfeld and Charles Berger. Chief Isadore's son, Narcisse, induced the tribe to donate enough money to have the church built and the tribal members built benches for pews. It became known as St. Michael's Chapel.

In 1931, under Chief Narcisse Isadore, the government built several homes in a circle around St. Michael's Chapel. The Chapel was used into the 1980s.

Recently this ornate Deacon's bench with Cathedral sides, which had spent some years in St. Michael's Chapel, was brought into the Museum. What a fine piece of furniture used by the priest and assistants for many of the religious ceremonies held in the church. It is on display in the Kootenai Tribal Exhibit along with the baptismal font from St. Michael's.



### Civilian Conservation Corps

What did Naples, Bonners Ferry, Porthill, Twenty Mile Creek, Skin Creek, and Smith Creek have in common dating back to 1934 & 35? The answer: Camps! Those years were the most active years for the CCC in Boundary County: The Civilian Conservation Corps, which was the first, most far-reaching, longest-lived and possibly the best-loved of the "New Deal" public relief programs.

The Museum welcomed Dr. Patricia Hart of the University of Idaho, a social and cultural historian with a focus on change in times of national crisis, and Ivar Nelson, former Director of the University of Idaho Press on September 22nd. Their program, "The CCC in Idaho: Building Our State While Supporting People in Hard Times," brought this era alive through a digital portal based on photographs and documents by the University of Idaho Library in an informal, conversational presentation. The program was funded in part by the Idaho Humanities Council, a nonprofit organization that serves as the state-based affiliate of the National Endowment for the Humanities.

The CCC was a public relief program, part of the New Deal between the years 1933-1942. The most active years in Boundary County were 1934 and 1935. The Bonners Ferry Herald noted that the Twenty Mile and Smith Creek Camps had been reopened for a brief time in 1937, following no activity in 1936. Most of the information regarding the

CCC Camps came by way of a weekly article entitled, "CCC Camp News," written by Joseph Doboze, one of the workers who was stationed at the Twenty Mile Camp.

The CCC in Idaho built the Ski Round House on "Baldy Mt.," several ski runs at Sun Valley, and the Ketchum Ranger Station. In Boundary County, the CCC built a road up Deer

Creek to Canuk Basin, and a road constructed from Fall Creek Camp past Roman Nose Mountain, crossing Snow, Caribou, and Myrtle Creek, and then crossing the divide at Russell Peak, and finally coming down Myrtle Creek to the Westside Road. They fought fires on Brown Creek, Gold Creek, and Pack River. Other CCC projects included highway construction and maintenance, building telephone lines, establishing trails and camps, planting trees, improving camp grounds and picnic areas, and stocking waters with fish.

The three main camps in Boundary County were the Twenty Mile, Smith, and Deer Creek Camps. Temporary camps, known as "spike camps," were established radiating out from the main camps for purposes of specific short-term projects.

Leonard Kucera, Sr., one of Boundary County's CCC boys, is quoted as having said, "I was stationed in Heyburn, Idaho in 1938-39. I got \$5 a month, in addition to room and board. The other \$15 in wages was sent home to my family. I was a waiter for the officers at meal times, and I crushed rocks to make bricks for building."

Dr. E.E. Fry, well-known doctor in Boundary County, received a great deal of satisfaction in helping the young physicians who were employed in the CCC camps. He saw that the hospital facilities were available to them and trained them in his

knowledge of surgery.

The Museum staff, thanks to many volunteers, created a wall display of local camps, men, and their many projects within Boundary County. Terry Howe, Museum Field Researcher, provided present-day photos of several camp sites. He and Howard Kent, Museum Historian, and Curator Sue Kemmis, researched details of the local CCC programs. Attendees enjoyed sharing personal stories and remembrances of local CCC camps over coffee and refreshments.

### A Forest Lover and a Physician

*In the turn-of-the-twentieth-century Northwest, the lives and passions of an American physician and her Swedish naturalist husband helped shape a territory on the cusp of change.*

*Dr. Carrie Leiberg, a pioneer physician, fought hard for public health while nurturing both a troubled son and a fruit orchard. Her husband, John Leiberg, was a Swedish immigrant and self-taught naturalist who transformed himself from pickaxe Idaho prospector to special field agent for the US Forest Commission and warned Washington DC of ecological devastation of public lands. The Leiberg story opens a window into the human and natural landscape of a century past that reflects all the thorny issues of our present time.*

*A new book, just released: The Dreamer and the Doctor by Jack Nisbet was featured at a program sponsored by Bonners Books and the Boundary County Historical Society, Inc. on Saturday, November 10, 2018 at 6:30 pm in Portrait Hall at the Museum. Approximately 33 attendees listened intently perched on the edge of their seats while Jack retold the adventurous story of John Leiberg and his wife, Carrie. Following the presentation, Jack held a book signing while John O'Connor of Bonners Books offered copies for sale. Jack Nisbet is the author of several collections of essays that explore the human and natural history of the Northwest. He has also written an award-winning biography of fur agent and cartographer David Thompson (Sources of the River).*

### School Tours

We all know that Teddy Roosevelt is well-known for the caribou head adorning the main room of the Museum, but did you know that he is also the “father” of the “Teddy Bear,” because of his compassion and protective decision concerning a black bear he encountered many years ago? Did you know that “Miz” Mary Hawkins served a special brand of tuna sandwiches to certain students ice skating on her pond if they were more than a little bit naughty? Do you know what made the music coming from the Edison Phonograph? How many sub-chiefs did the Kootenai Tribe have back in the day? All these questions are answered each Spring when the fourth grade public school children arrive at the Museum for their school tours. Late May and early June finds Sue telling and retelling these and many other stories as each class comes into the Museum for their own special lesson plan time. Howard Kent adds his own flavor to many of the stories, keeping the students wondering at times! Dave Gray can be heard telling about Teddy’s Bear and enticing kids to rub his nose for good luck. And when they learn of the Kootenai Kid hiding somewhere in the Museum, and the little white mouse pretending to be Hickory, Dickory Dock, hiding in a clock, there is just too much fun afoot. This is a great opportunity for you volunteers who love kids to come in and help guide the tours. Will we see you next May?

## Boundary County Historical Society

### Annual Meeting

Tuesday, **JANUARY 22, 2019**

**6:00pm**

Portrait Hall

7229 Main St., Bonners Ferry, Idaho

### Agenda Items

- \* Call to Order
- \* Annual Reports
- \* Election of Trustees
- \* Old/New Business
- \* Adjournment

**January Trustees Meeting**

**6:30pm**

*Refreshments will be served*

Memberships in the Boundary County Historical Society and Museum provide a significant and necessary source of funding, as well as showing support, for your Museum. If you haven't renewed your membership, please consider doing so by filling out the form and returning it to the Museum in person or by mail. Members receive free admission to the Museum, a 10% discount on purchases at the White Caribou Gift Shop and the Museum newsletter. Memberships also make great gifts for relatives and friends.

### Pack Stories

What was the name of that man who came to Idaho from New York State, and built a ferry and a trading post in 1864? Was it Edward, or Edwin, or Edmund? Children's voices complete the question with “Bonner!” But confusion does exist with the man's first name, as Idaho called him Edwin and Montana called him Edward. Would the real E.L. Bonner please stand up!

This is just part of the fun the Education Committee has with its Pack Stories in April, when the story of E.L. Bonner and how Bonners Ferry got its name is taken to the fourth graders in the elementary schools. Artifacts that will help to tell the story are packed into a canvas pack and taken to each classroom. “Authentic 1864 maps” are prepared for the students to follow Bonner's journey from The Dalles, Oregon to Chelempa. Each student receives a copy of The Faces of History booklet to connect names with faces of some of our early pioneers. This is an interactive lesson, and the children get into the format of responding to questions and comments very quickly. What a lot of fun we have with them, and they with us.

### 2019 Friends of the Museum ~ Mountain High Levels

<input type="checkbox"/> Fisher Peak (7,585')	\$1,000.00
<input type="checkbox"/> Roman Nose (7,260')	\$ 500.00
<input type="checkbox"/> Burton Peak (6,844')	\$ 250.00
<input type="checkbox"/> Mount Clifty (6,705')	\$ 100.00
<input type="checkbox"/> Queen Mountain (6,112')	\$ 50.00

### 2019 Annual Membership Levels (Based on calendar year)

<input type="checkbox"/> Individual	\$ 15.00
<input type="checkbox"/> Basic Family	\$ 25.00
<input type="checkbox"/> Senior Individual (65 and +)	\$ 10.00
<input type="checkbox"/> Senior Couple (65 and +)	\$ 15.00

Name \_\_\_\_\_

Address \_\_\_\_\_

City \_\_\_\_\_ State \_\_\_\_\_ Zip \_\_\_\_\_

E-mail \_\_\_\_\_ Telephone \_\_\_\_\_ -- \_\_\_\_\_

**Make checks payable to Boundary County Historical Society, Inc. & Museum**

P. O. Box 808 7229 Main Street Bonners Ferry, Idaho 83805 208-267-7720

bcmuseum@meadowcrk.com - www.boundarycountymuseum.org -

www.bonnersferrymuseum.org - Like Us on Facebook

## A NIGHT FOR THE MUSEUM

Oktoberfest music permeated the Museum's hallowed spaces, greeting guests coming for the annual "A Night for the Museum" fund raising dinner and auction. A German-themed dinner and beverages



were provided by Jill and Dan Nystrom of The Rusty Moose, featuring bratwurst with sauerkraut, German cucumber salad, potatoes, and slaw, topped off with German Chocolate Cake donated by our local Safeway grocery store. Museum artifacts provided entertainment as part of the Museum Trivia game activity: Prussian Helmet from WW1, an Armadillo taxidermy hand bag from Mexico, "Talc-em Brush" for powdering baby's behind, Medicine/Ceremonial Rattle made from Deer dew-claws belonging to Simon Francis, and a white granite "Mano" once belonging to Catherine Francis, used for scrubbing hair from soaked hides were among the pieces from the Museum's collection. Cal Russell, Society President and emcee, led the group in the heads/tails/50/50 game netting the winner half the "pot," which was won by Laurie Edwards who promptly donated it back to the Museum.

The Society's "Education Committee," shared stories of a number of colorful folks of German descent who played an active role in the early days of Kootenai/Boundary County. Among these were Albert Klockmann, one-time owner of the famed Continental Mine, Fred C. Fisher, owner and operator of The White Caribou Bar in Porthill and downtown Bonners Ferry, and Henry Blume, grandfather of Bill (Blume), the Barber. A brief history of the true meaning of the Swastika and "The Swastika Club of Bonners Ferry," added entertaining pieces of history to the program, as did a snapshot of the original Oktoberfest and its significance.

Following all this fun, John Sater of Sater's Auction, took charge of the live auction, containing 22 items. Some of these included 2 one-day passes to Silverwood Theme Park, a Room/Spa/Springs package, modernistic wood floor lamp, a metal art moose 'Welcome' sign and a pine cone 'Welcome' sign, a leaf blower, and many baskets filled with fleece blankets, wine, hand-crafted jewelry, gift certificates and other items generously donated by businesses and individuals. John kept the bidding lively and competitive, as those vying for their favored "prizes" continued to lend to the laughter and chatter of the evening. Door prizes and drawings completed the evening in fine form. The



Boundary County Historical Society and Museum wish to acknowledge all those who attended, who donated funds and their time to make this a successful event. The funds raised from the evening will be used to upgrade lighting inside the Museum to LED, which will replace the outdated fluorescent tubes. Thank you for your support and generosity

through attending this dinner and participating in the various fund raising activities during the course of the evening.

## IDAHO DAY

The date was 1863, and the place somewhere far north in Kootenai County. Settlers were coming into the area, clearing land, preparing to build homes, and starting farms. This became the setting for an archaeology dig celebrating Idaho Day. The Idaho Legislature, in 2015, established an official Idaho Day to be observed each year on March 4th to commemorate the creation of Idaho by President Abraham Lincoln in 1863. The Idaho Statehouse and many communities around the state this year were presenting programs on Monday, March 5th. Fourth grade students from Naples, Mount Hall, and Valley View arrived at the Boundary County Museum for the "dig." In small groups, students created a grid using string taped across the top of a box representing their "dig site," dividing the box into 9 blocks. A cadre of volunteers from the Museum assisted each group as they proceeded to uncover their treasures.



As they carefully began to excavate, using simple tools such as plastic spoons, toothpicks, and watercolor brushes, they sketched their "findings" onto a paper grid. Such items as Kootenai Tribal artifacts from the Museum's collection, feathers, berries, bones, animal hair, and rock shards were recorded on the groups' grids. Sue Kemmis, Museum Curator, engaged everyone in discussion of what the objects may be and how they may have been used by the early people of the area. The room was filled with excited voices and ideas bouncing around among the groups. In all, 110 budding archaeologists participated and enjoyed this special event. Just prior to bus time, each student, teacher, assistant, bus driver, and volunteer team leader received a sugar cookie, cut in the shape of Idaho, with a star for Bonners Ferry. Oh what a Dig!